

PRODUCT DESCRIPTION

The AgriMarine 42" Axial Pump was custom engineered for low head/high capacity pumping requirements, typically in hatcheries and land-based recirculation systems (RAS), or where large amounts of water need to be moved.

The AgriMarine 42" Axial Pump may be engineered to suit your requirements, ensuring cost-efficiency and superior performance.

DESIGN FEATURES

- Superior high performance Axial Pump
- Sophisticated design that transfers high volume water with low head
- Pump efficiency up to 85%
- Durable and robust construction for long life
- Reliable and proven performance

PRODUCT APPLICATIONS

- Diverse aquaculture applications
- For salt and fresh water bodies
- With small size adjustments, the applications are unlimited (where large quantities of water are required to move with low head such as waterworks, water supply, drainage and irrigation)

TYPICAL OPERATING PARAMETERS*

- Optimum Capacity: 5700 m³/h -6480 m³/h
- Heads up to: 1.2m (4 ft)
- Available in 42", (1.05 m) sizes (smaller diameters available)

(*Custom designs available for limits exceeding those listed)



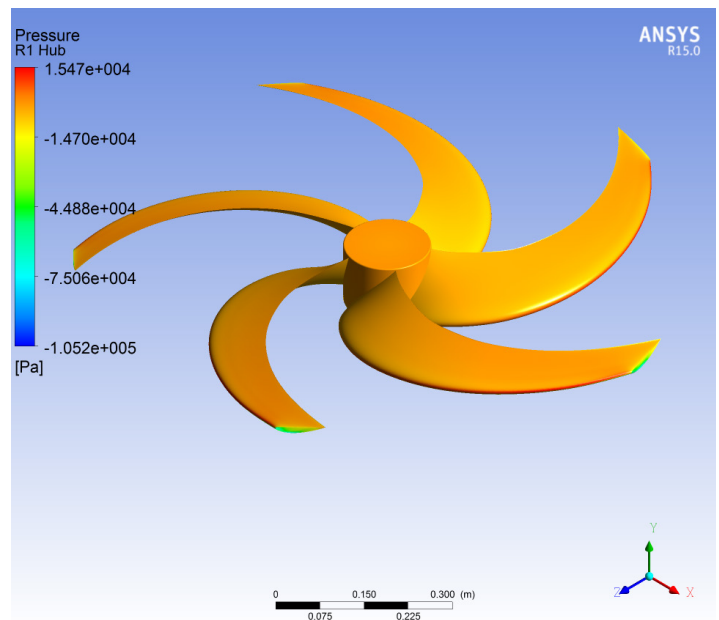
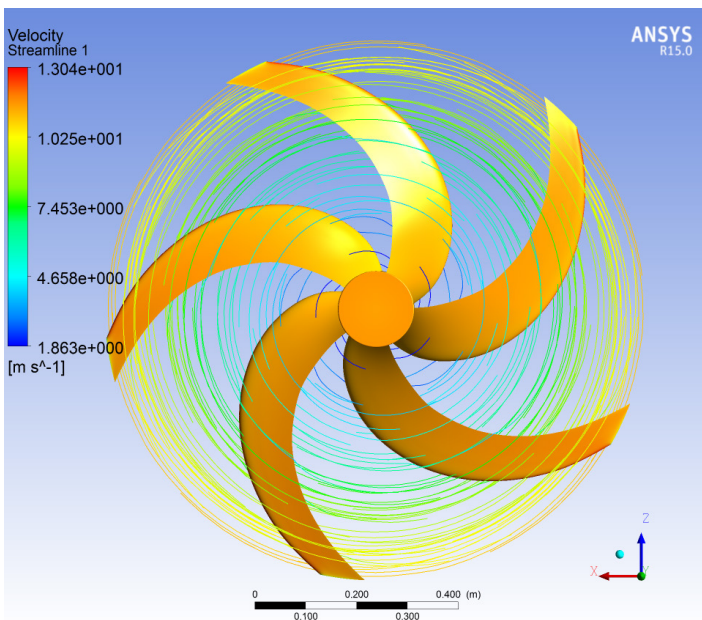
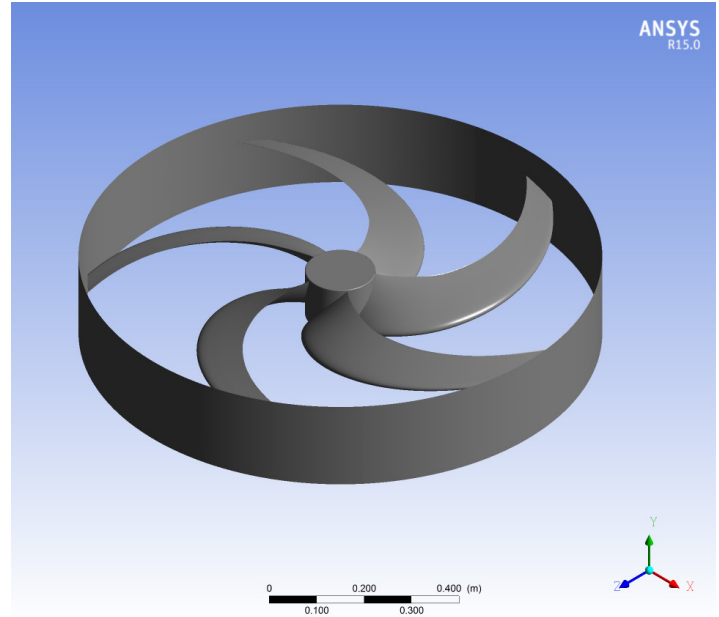
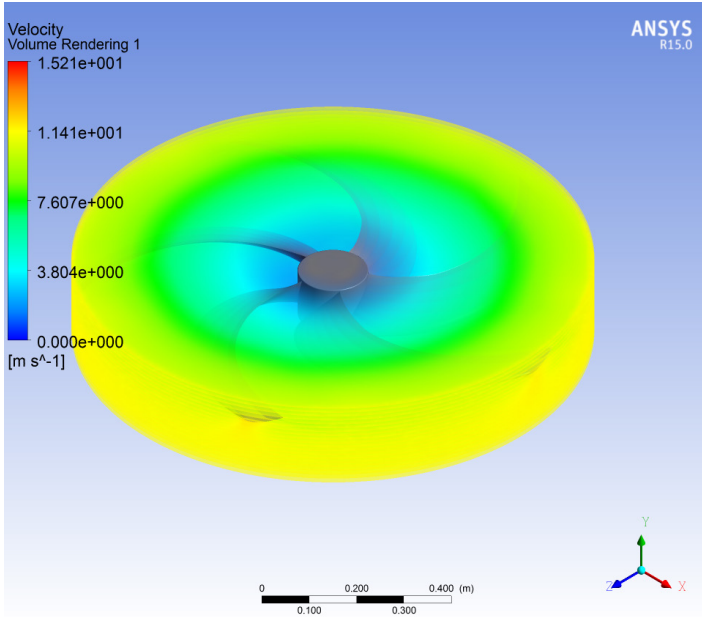
Contact Us:

240-1829 Beaufort Avenue 250-941-3099 T
Comox, BC 1-844-941-3099 Toll Free
Canada, V9M 1R9 250-941-3081 F

Email: inquiries@agrmarine.com
www.agrmarinetechnologies.com

Follow Us:





Contact us for an estimate.

We are pleased to work with you during your project planning stage in order to consider all aspects of your current and future requirements, as well as your budget requirements and specifications.

Contact Us:

240-1829 Beaufort Avenue 250-941-3099 T
Comox, BC 1-844-941-3099 Toll Free
Canada, V9M 1R9 250-941-3081 F

Email: inquiries@agrmarine.com
www.agrmarinetechnologies.com

Follow Us:

